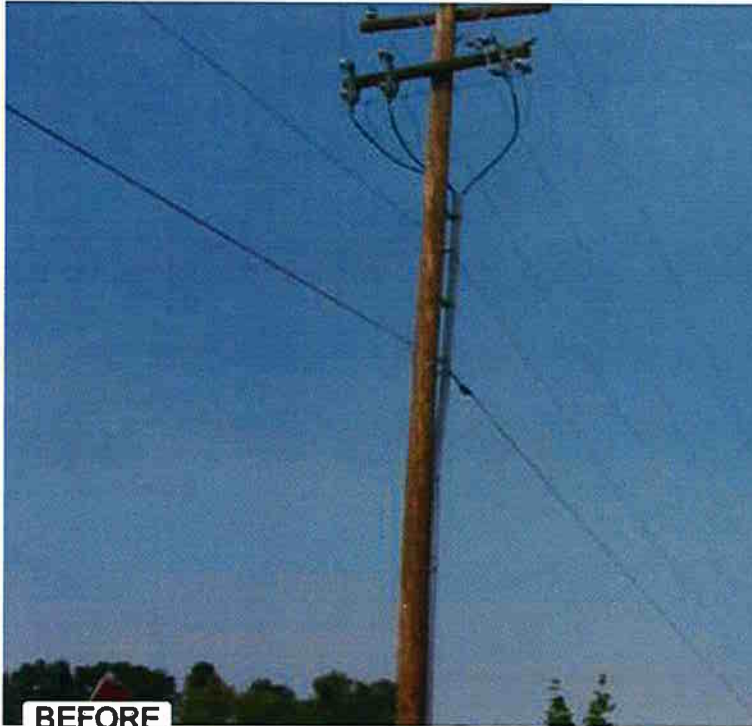



4th Street

AFTER



BEFORE



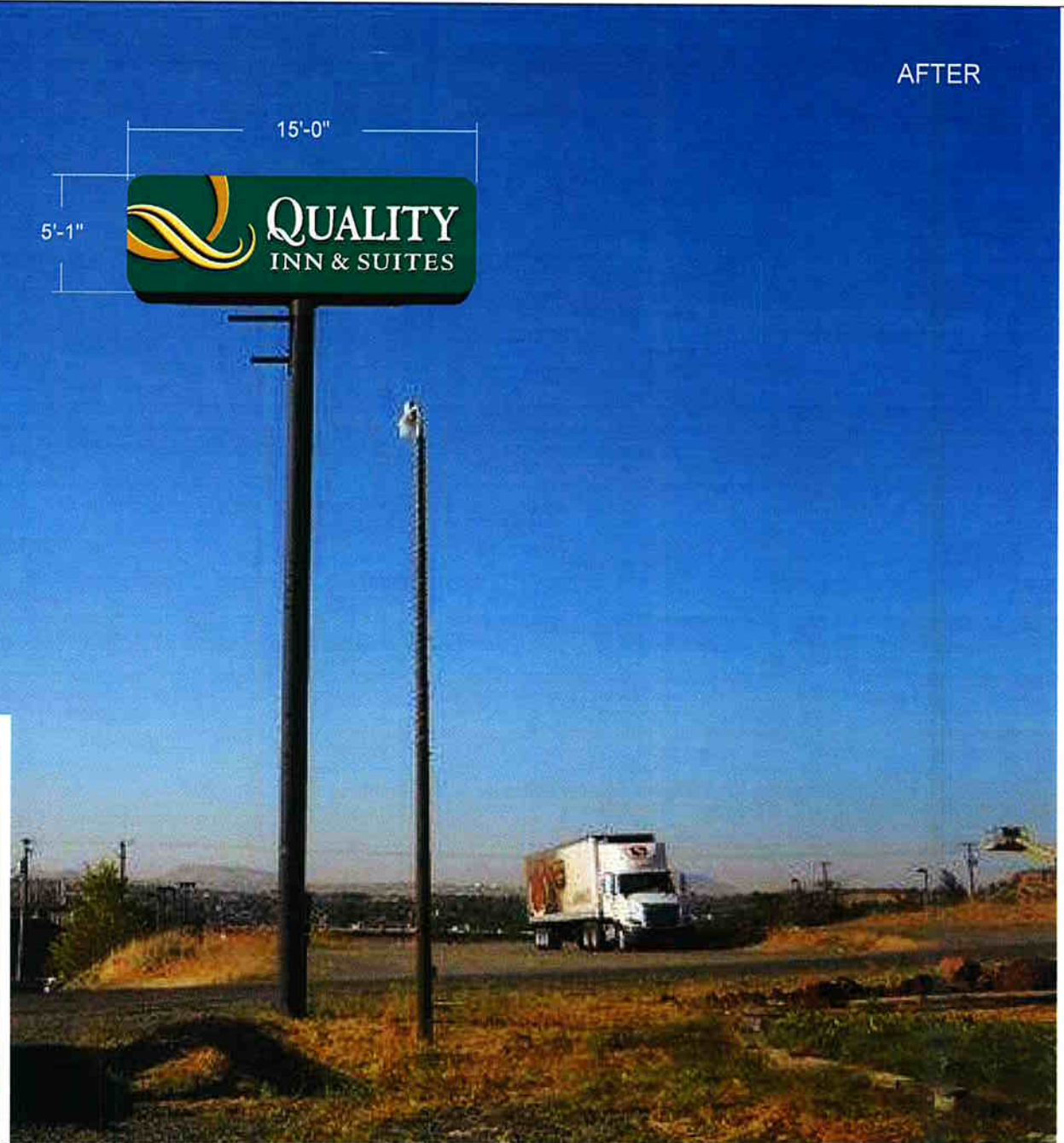
Customer: QUALITY INN & SUITES	Date: 08/13/10	Prepared By: TrT/JJA	Note: Color output may not be exact when viewing or printing this drawing. All colors used are PMS or the closest CMYK equivalent. If these colors are incorrect, please provide the correct PMS match and a revision to this drawing will be made.	 PHJ 1-800-843-8686	DISTRIBUTED BY SIGN UP COMPANY 708 21st STREET SOUTHWEST PO BOX 210 WATERTOWN, SD 57201-0210
Location: MADRAS, OR	File Name: 100891 - R2 - 5X15 DF POLE(2)	ENG: X			


I Street

AFTER



BEFORE



Customer: QUALITY INN & SUITES	Date: 9/1/10	Prepared By: TrT	<small>Note: Color output may not be exact when viewing or printing this drawing. All colors used are PMS or the closest CMYK equivalent. If these colors are incorrect, please provide the correct PMS match and a revision to this drawing will be made.</small>		<small>DISTRIBUTED BY SIGN UP COMPANY 700 21st STREET SOUTH-WEST PO BOX 210 WATERTOWN, SD 57201-0210</small>
Location: MADRAS, OR	File Name: 100891 - R2 - 5X15 DF POLE(2)	ENG: X			