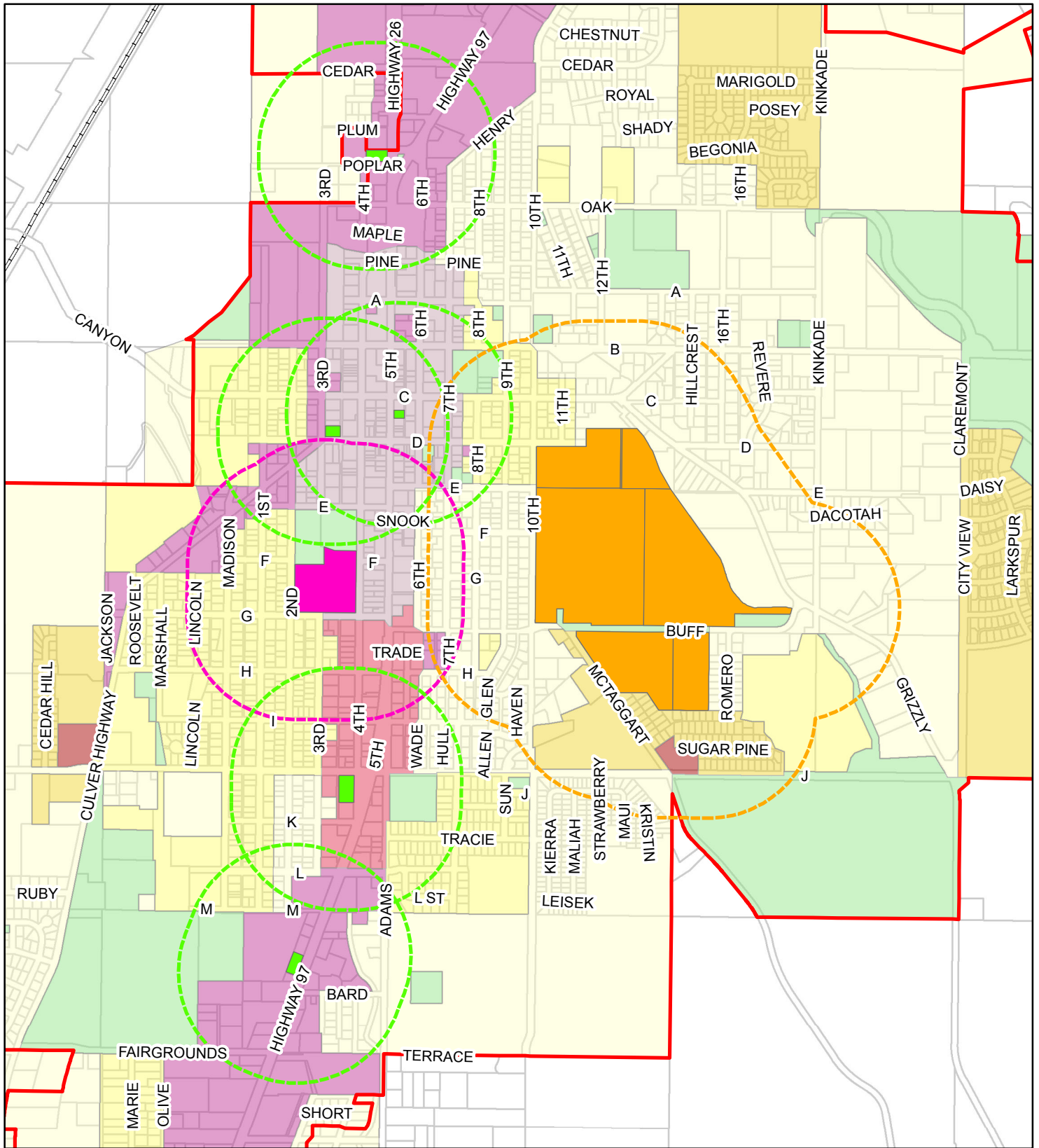


# Existing Marijuana Dispensaries & Schools Proximity Map



The City of Madras uses GIS data in support of internal business functions and the public services it provides. GIS data may not be suitable for other purposes or uses. The requester shall verify information derived from GIS data before making any decisions or taking any actions based on the information. The City of Madras shall not be liable for errors in the GIS data. This includes errors of omission, commission, errors concerning the content of the data, and relative and relational accuracy of the data. The City of Madras assumes no legal responsibility for this information.



1 inch = 1,249 feet

N.Snead, City of Madras, 10/2/2018

- Existing Dispensaries 1,000 ft. Buffer
- Existing Dispensaries 10-02-18
- Elementary Schools & High School 1000 ft. Buffer
- Elementary Schools & High School
- Westside Elementary 1000 ft. Buffer
- Westside Elementary School
- City Limits
- Taxlots

- City Limits
- Taxlots

### Zoning

- |    |    |
|----|----|
| R1 | C2 |
| R2 | C3 |
| R3 | NC |
| OS | I  |
| C1 | AD |